



CASAMOOD



GIOLLI
INDUSTRIA COLORI



CASAMOOD
PITTURA DECORATIVA
EFFETTO SABBIAIO OPACO
PER ESTERNI E INTERNI

CASAMOOD
DECORATIVE PAINT
MATTE SANDED EFFECT
FOR EXTERIOR AND INTERIOR

CASAMOOD
PEINTURE DÉCORATIVE
EFFET SABLÉ MAT
POUR EXTÉRIEUR ET INTÉRIEUR

ESPERIENZA
MATERICA,
STILE UNICO

A TACTILE
EXPERIENCE,
A UNIQUE STYLE

UNE EXPÉRIENCE
SENSORIELLE,
UN STYLE UNIQUE



Casamood è molto più di una semplice pittura decorativa: è un'esperienza materica che trasforma ogni superficie in un'opera di stile. Il suo esclusivo effetto sabbato opaco, pensato per interni ed esterni, nasce da una selezione accurata di cariche pregiate che donano alla finitura un aspetto ruvido, sofisticato e profondamente contemporaneo.

Casamood is much more than just decorative paint: it's a tactile experience that transforms any surface into a style statement. Its exclusive matte sanded effect, designed for both interiors and exteriors, is the result of a careful selection of premium fillers that give the finish a rough, sophisticated, and distinctly contemporary appearance.

Casamood est bien plus qu'une simple peinture décorative : c'est une expérience sensorielle qui transforme chaque surface en une véritable œuvre de style. Son effet sablé mat exclusif, conçu pour l'intérieur comme pour l'extérieur, naît d'une sélection minutieuse de charges nobles qui confèrent à la finition un aspect brut, sophistiqué et résolument contemporain.



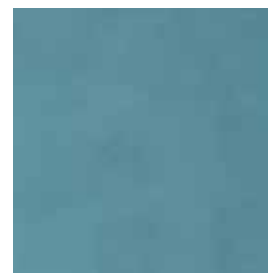


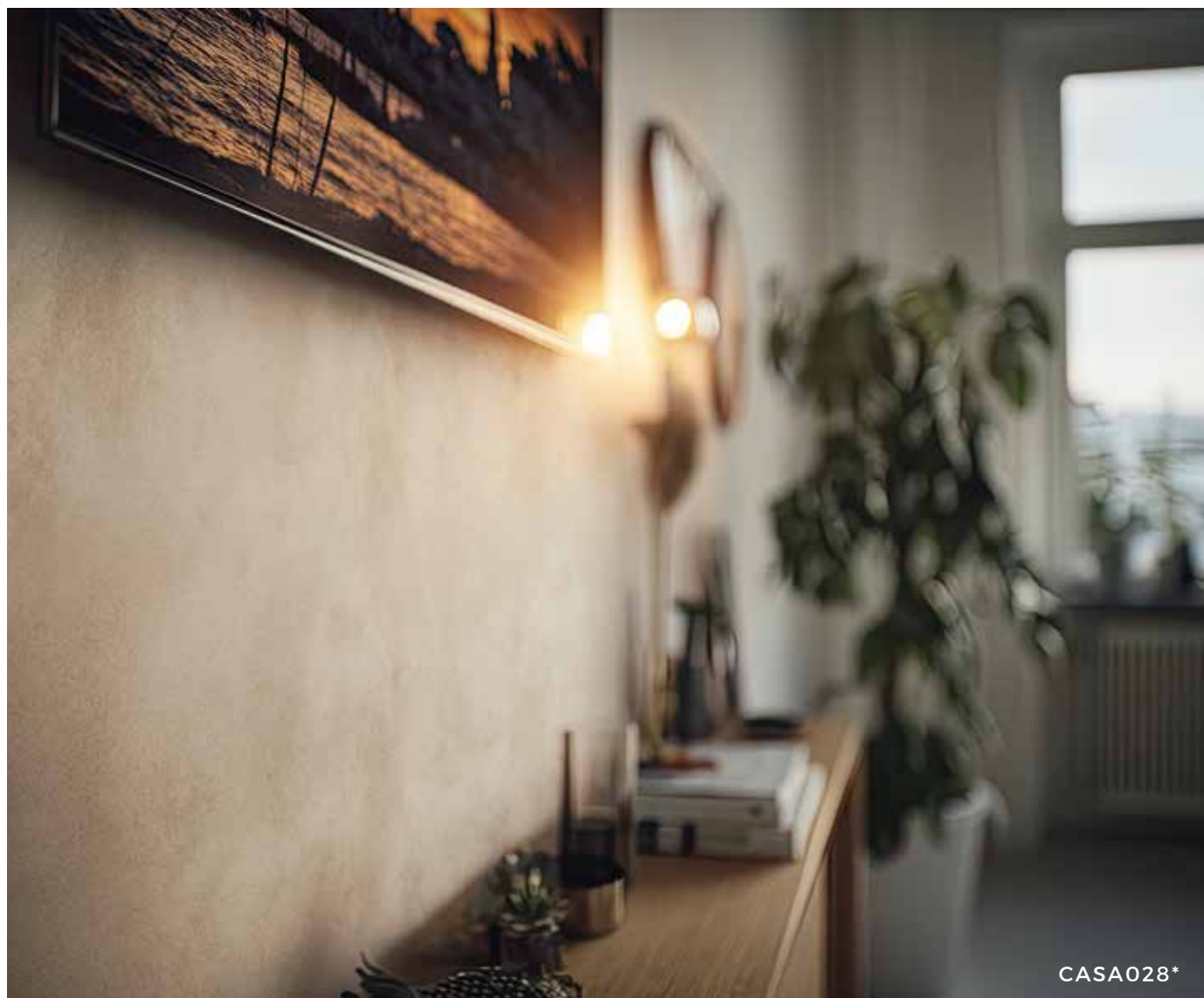


SUPERFICI
CON UN'ELEGANZA
DISCRETA MA
INCONFONDIBILE

SURFACES
WITH SUBTLE
YET UNMISTAKABLE
ELEGANCE

DES SURFACES
À L'ÉLÉGANCE
DISCRÈTE
MAIS INIMITABLE





Perfetta per chi desidera ambienti dal carattere deciso e ricercato, Casamood veste pareti e superfici con un'eleganza discreta ma inconfondibile. Scegli il fascino autentico di una pittura che unisce design e matericità, per spazi dall'identità unica e raffinata.

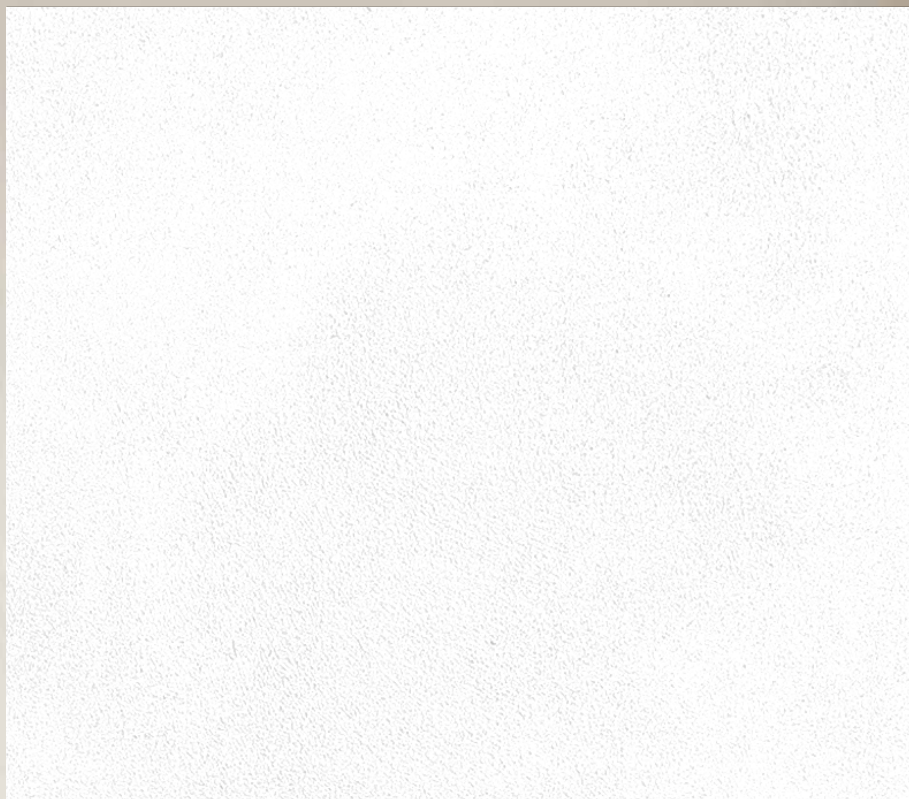
Perfect for those seeking spaces with a bold and refined character, Casamood dresses walls and surfaces with a subtle yet unmistakable elegance. Choose the authentic charm of a paint that blends design with materiality, creating spaces with a unique and sophisticated identity.

Parfaite pour ceux qui recherchent des espaces au caractère affirmé et raffiné, Casamood habille murs et surfaces d'une élégance discrète mais inimitable. Choisissez le charme authentique d'une peinture qui allie design et matérialité, pour des espaces à l'identité unique et sophistiquée.

CASAMOOD







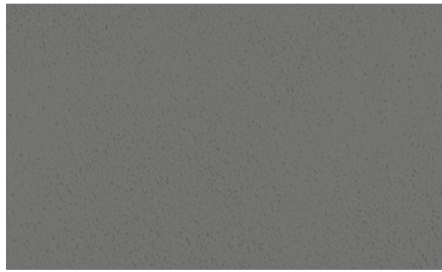
CASAMOOD

BIANCO

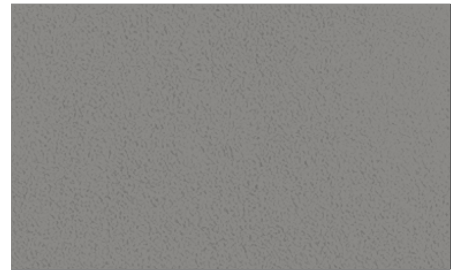




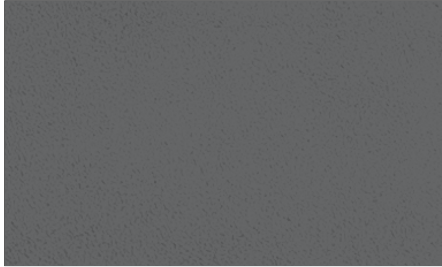
CASA001



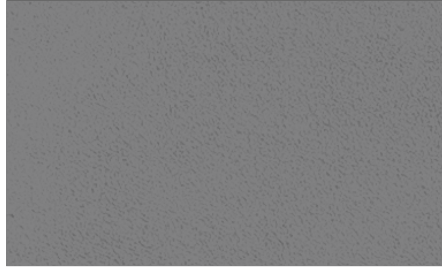
CASA002



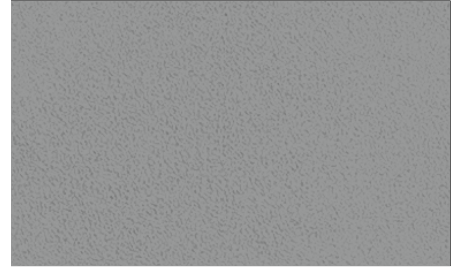
CASA003



CASA004

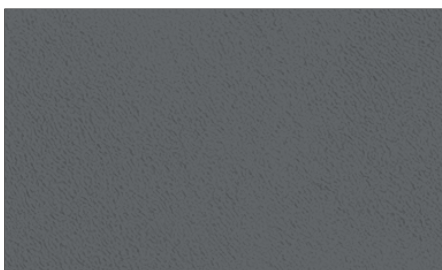


CASA005

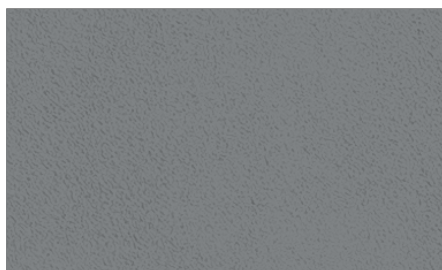


CASA006

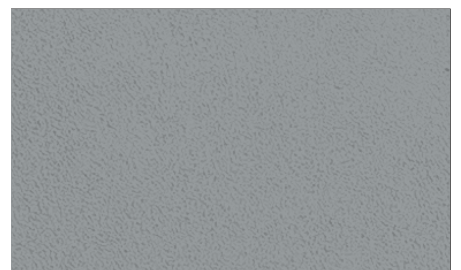
CASA001 *



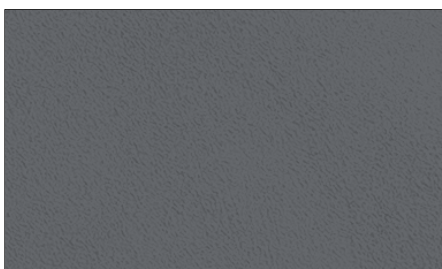
CASA007



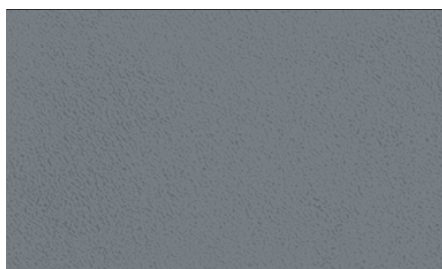
CASA008



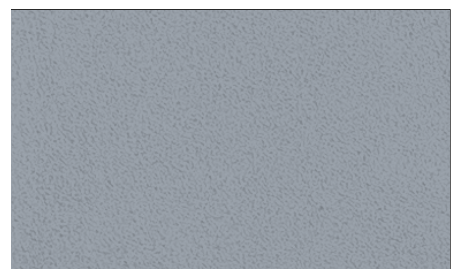
CASA009



CASA010



CASA011



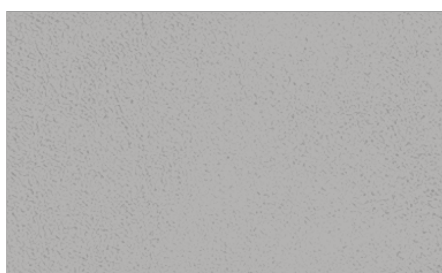
CASA012



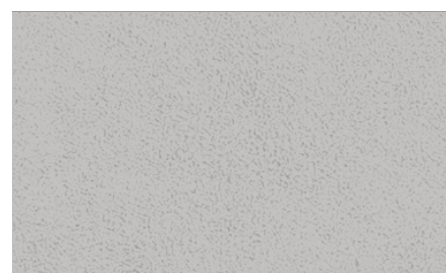
CASA024*



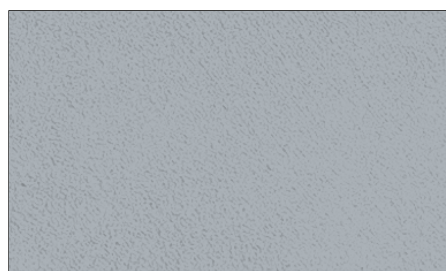
CASA013



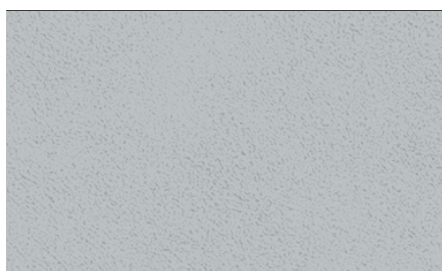
CASA014



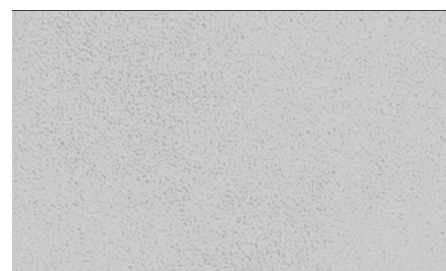
CASA015



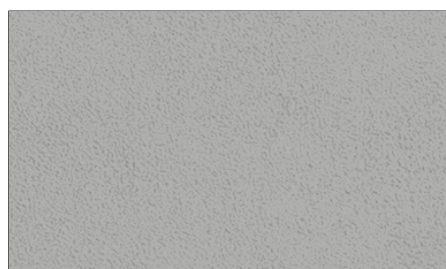
CASA016



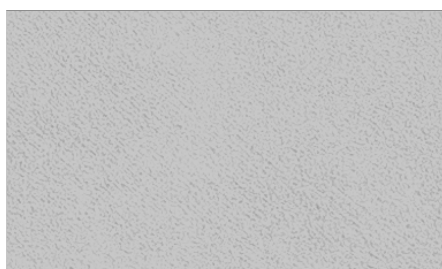
CASA017



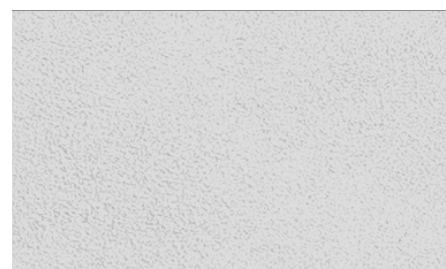
CASA018



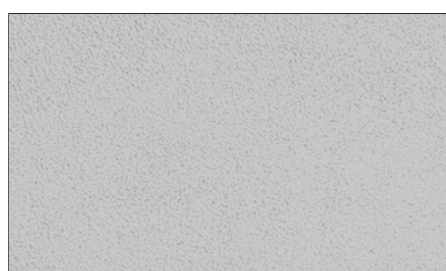
CASA019



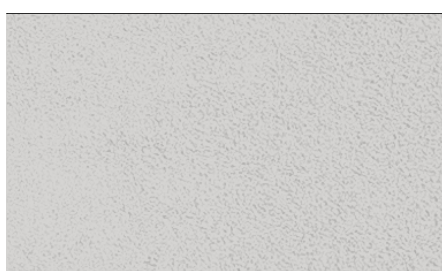
CASA020



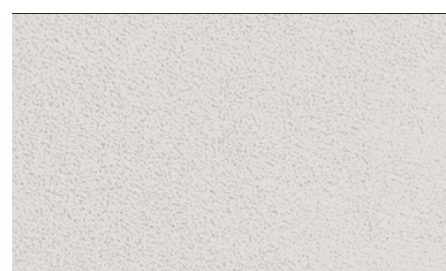
CASA021



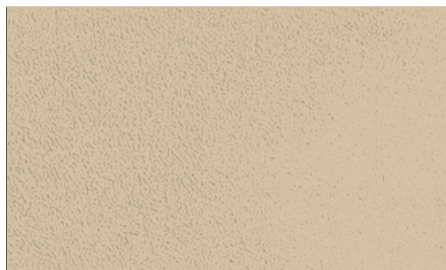
CASA022



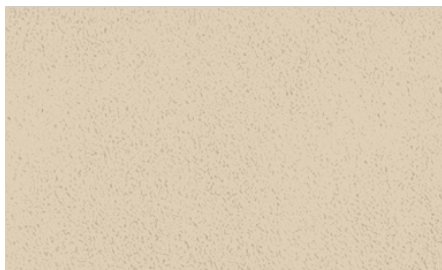
CASA023



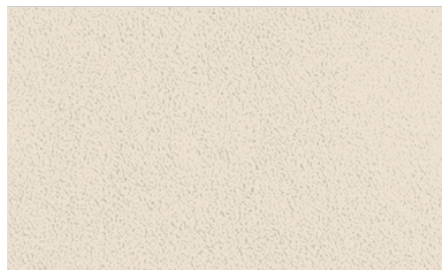
CASA024



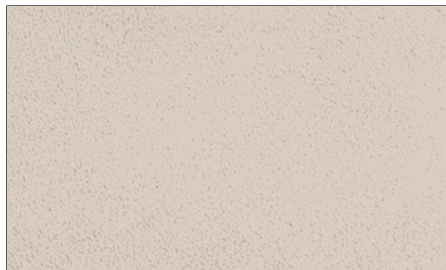
CASA025



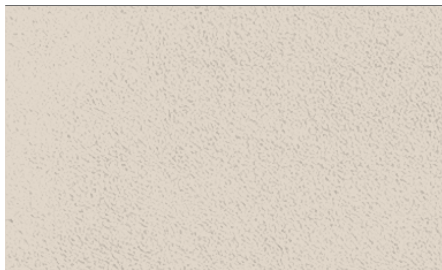
CASA026



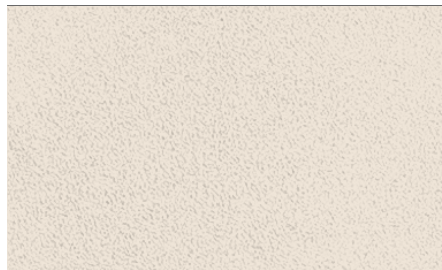
CASA027



CASA028



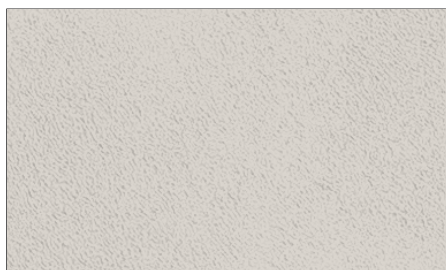
CASA029



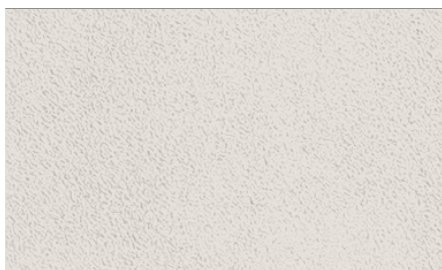
CASA030



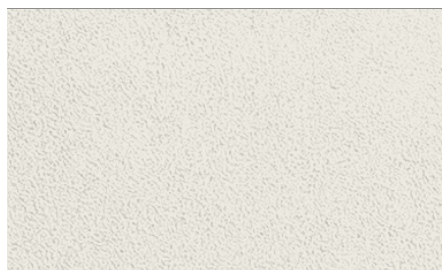
CASA035*



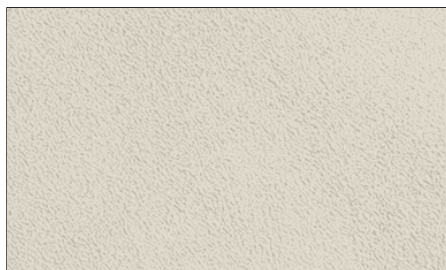
CASA031



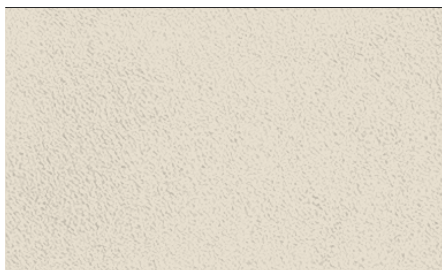
CASA032



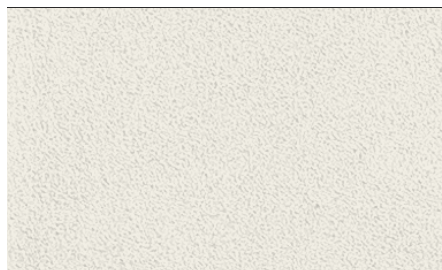
CASA033



CASA034



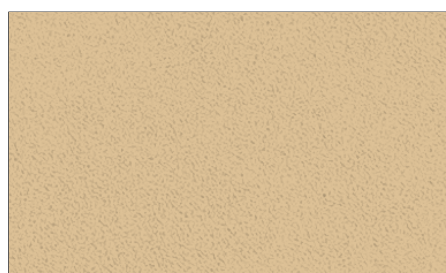
CASA035



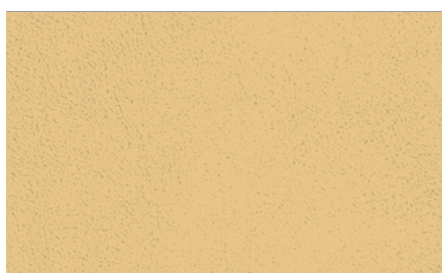
CASA036



CASA037*



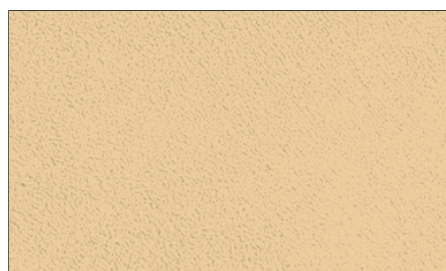
CASA037



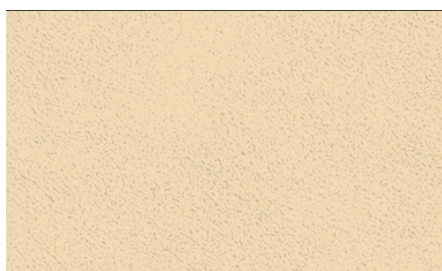
CASA038



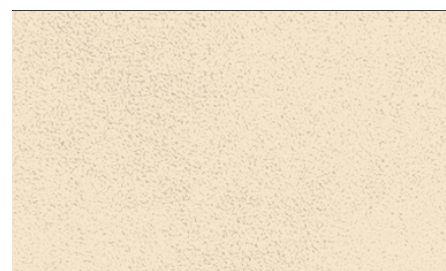
CASA039



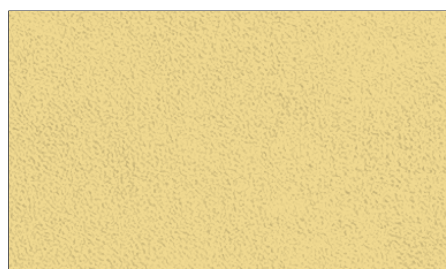
CASA040



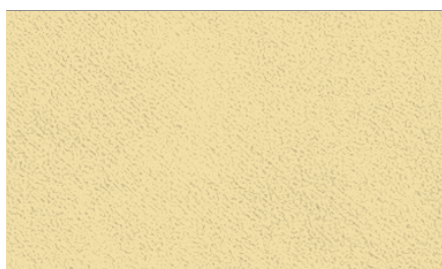
CASA041



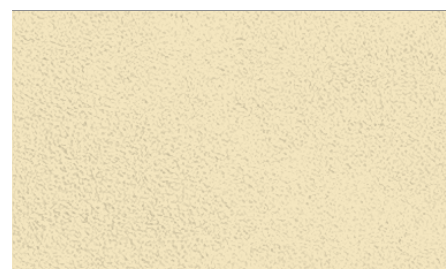
CASA042



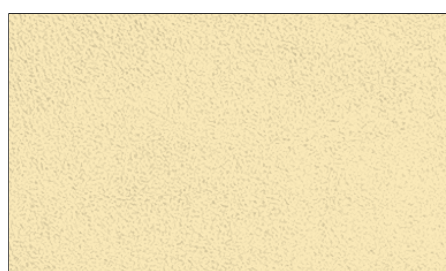
CASA043



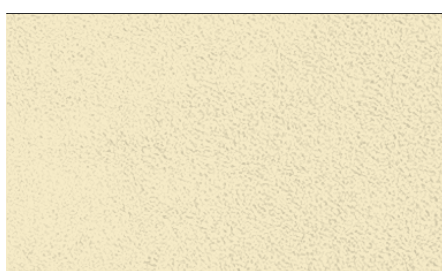
CASA044



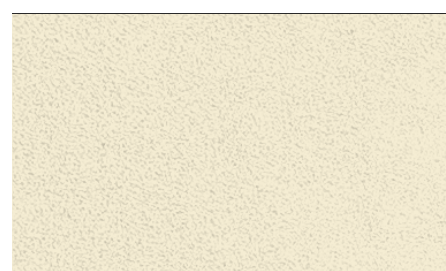
CASA045



CASA046



CASA047



CASA048



CASA049



CASA050



CASA051



CASA052



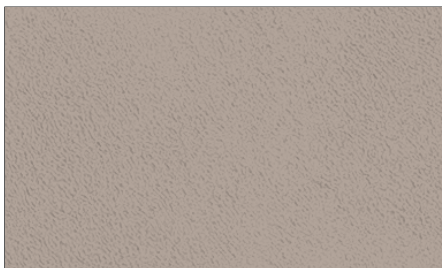
CASA053



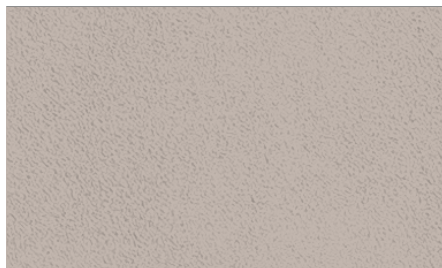
CASA054



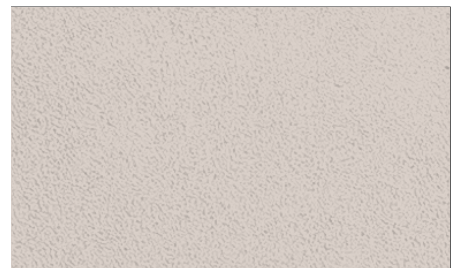
CASA052*



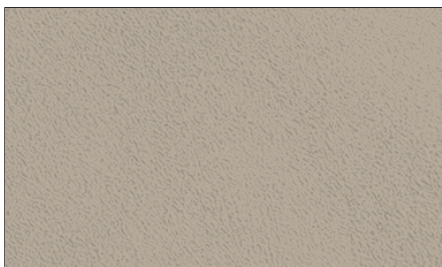
CASA055



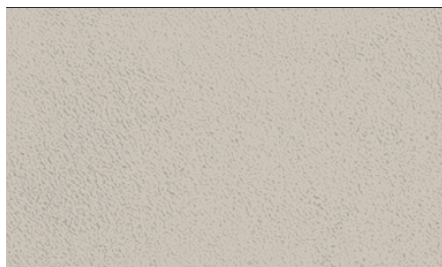
CASA056



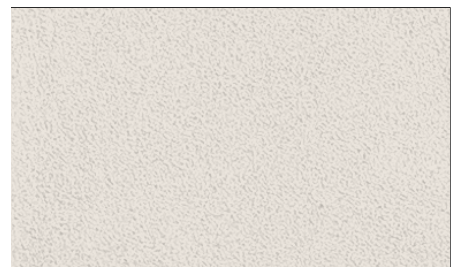
CASA057



CASA058



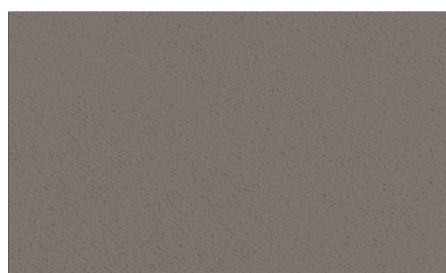
CASA059



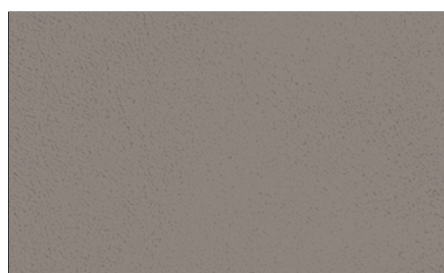
CASA060



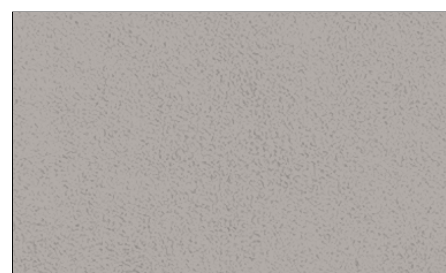
CASA71*



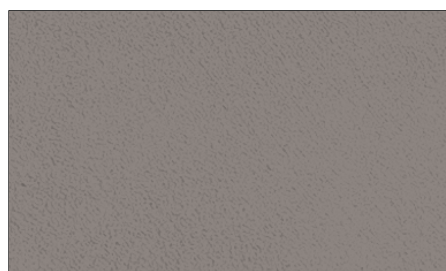
CASA061



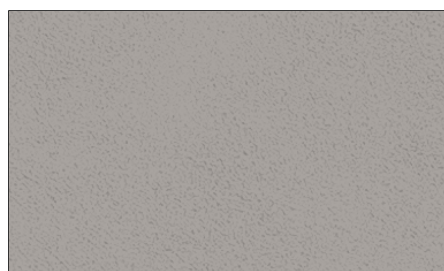
CASA062



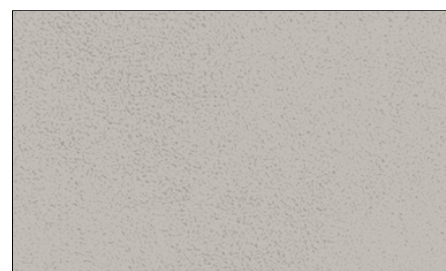
CASA063



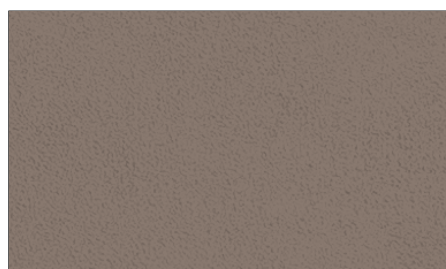
CASA064



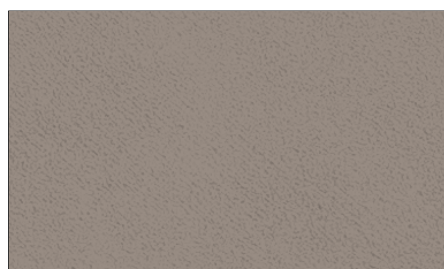
CASA065



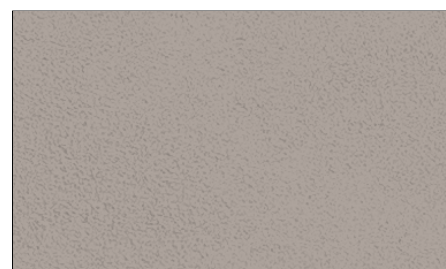
CASA066



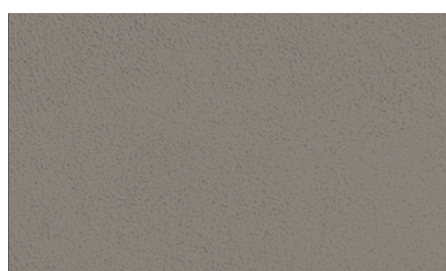
CASA067



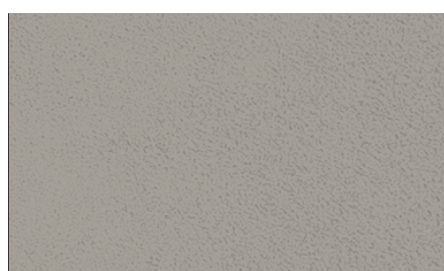
CASA068



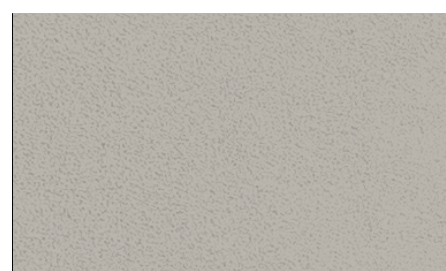
CASA069



CASA070



CASA071



CASA072



CASA073



CASA074



CASA075



CASA076



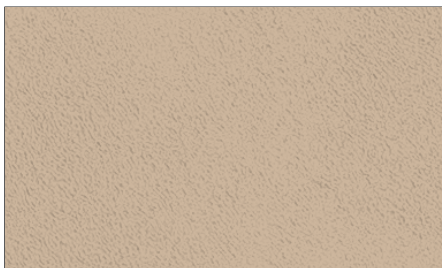
CASA077



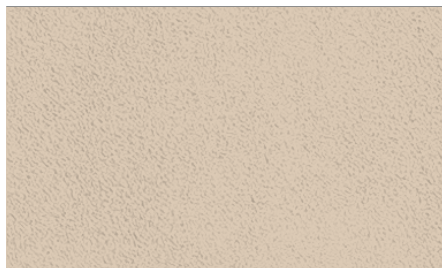
CASA078



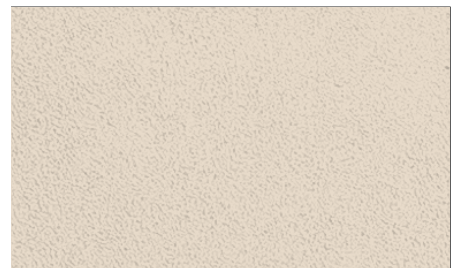
CASA083*



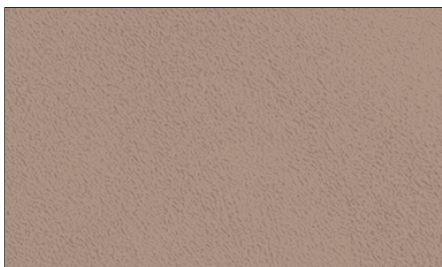
CASA079



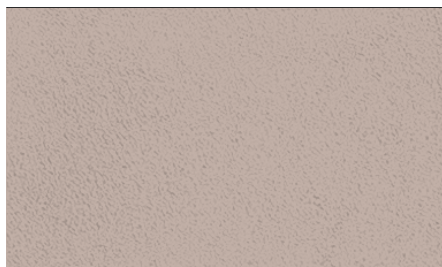
CASA080



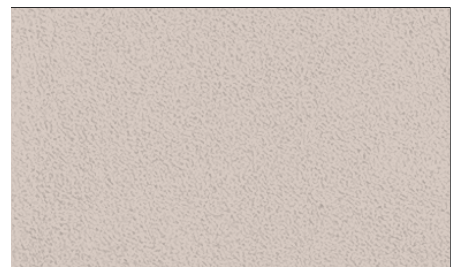
CASA081



CASA082



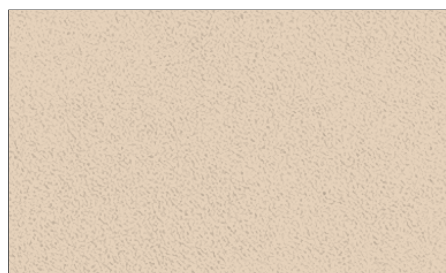
CASA083



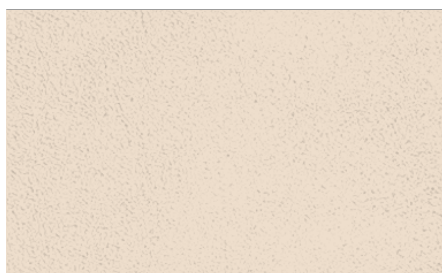
CASA084



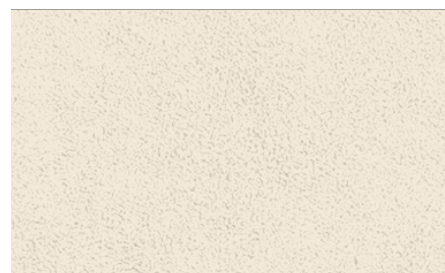
CASA086*



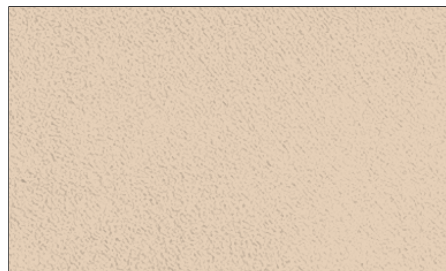
CASA085



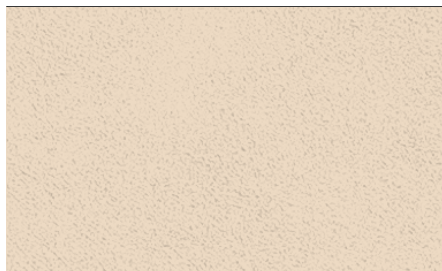
CASA086



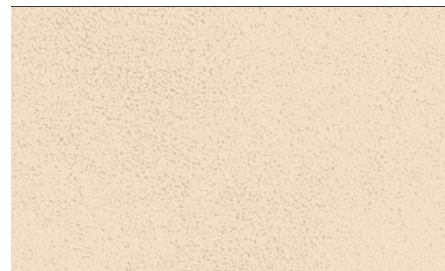
CASA087



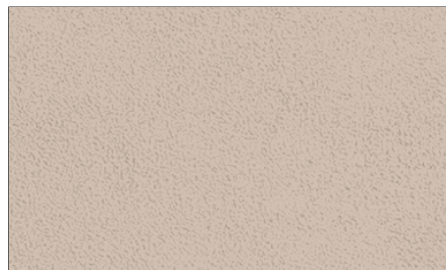
CASA088



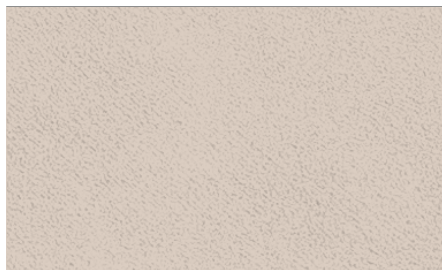
CASA089



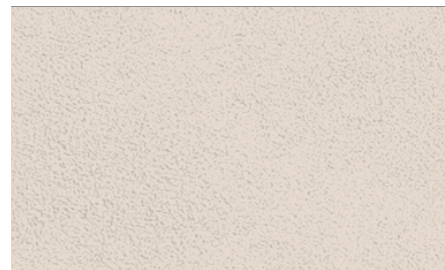
CASA090



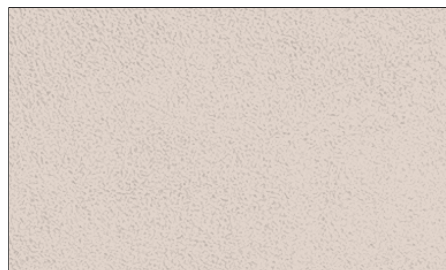
CASA091



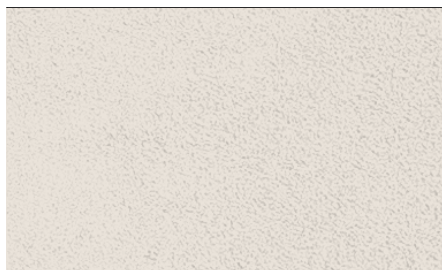
CASA092



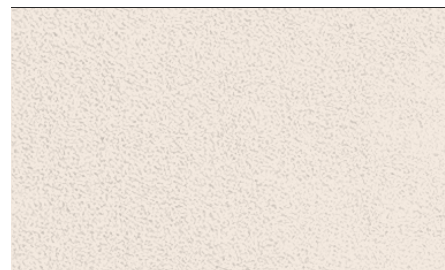
CASA093



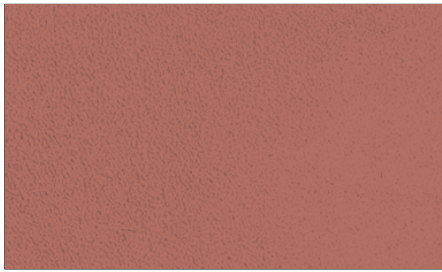
CASA094



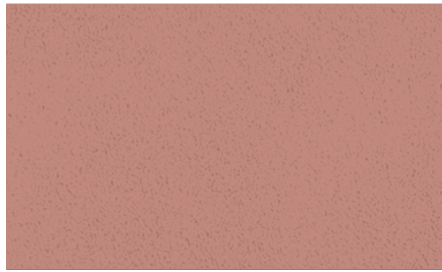
CASA095



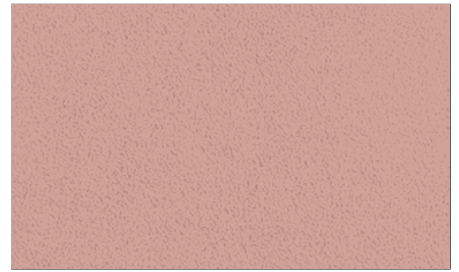
CASA096



CASA097



CASA098



CASA099



CASA100



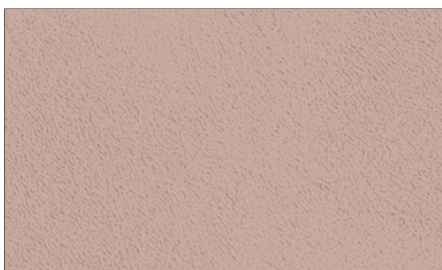
CASA101



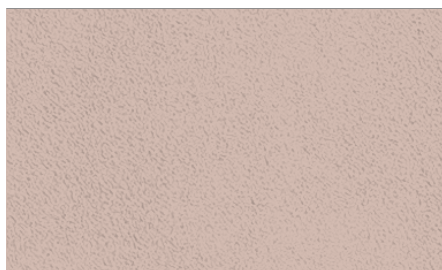
CASA102



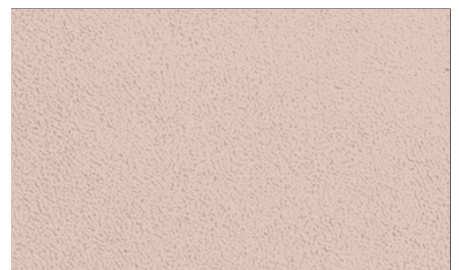
CASA099*



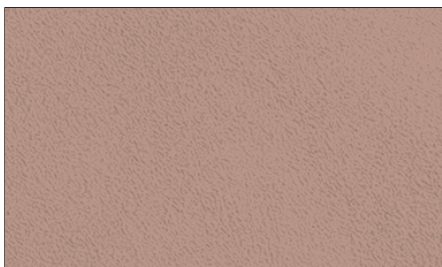
CASA103



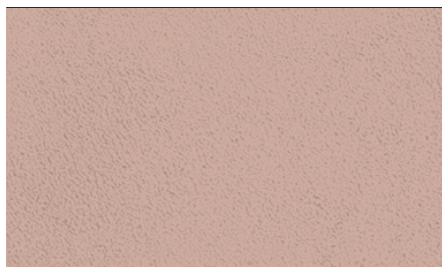
CASA104



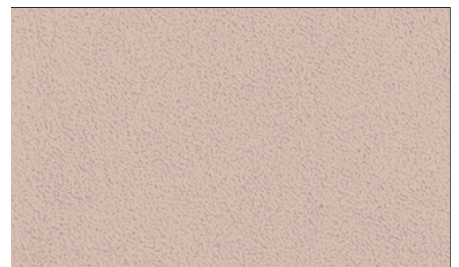
CASA105



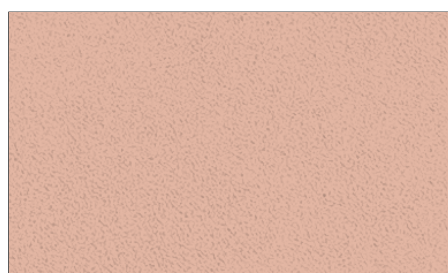
CASA106



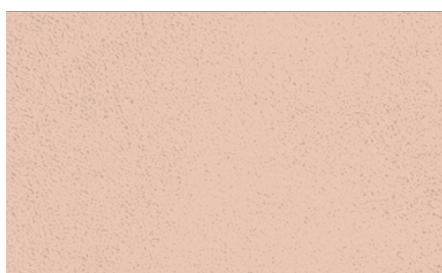
CASA107



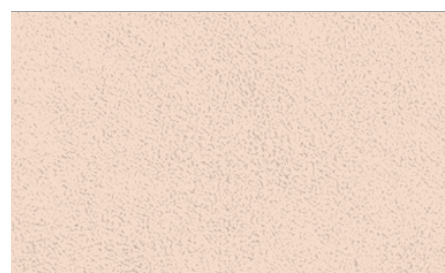
CASA108



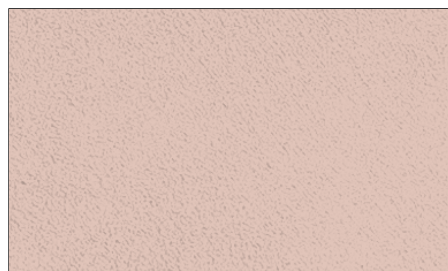
CASA109



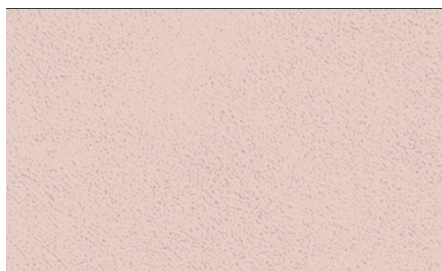
CASA110



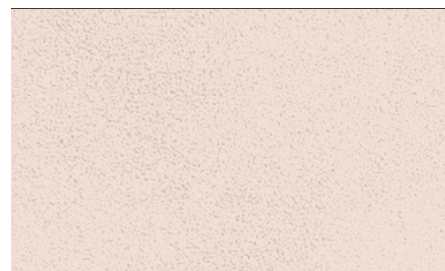
CASA111



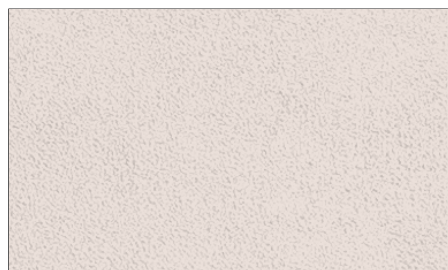
CASA112



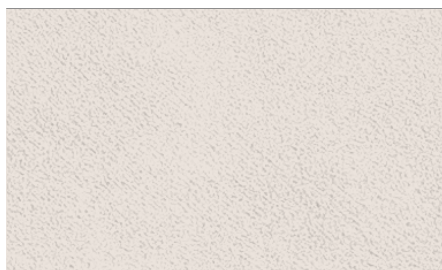
CASA113



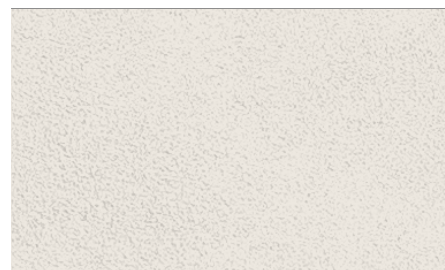
CASA114



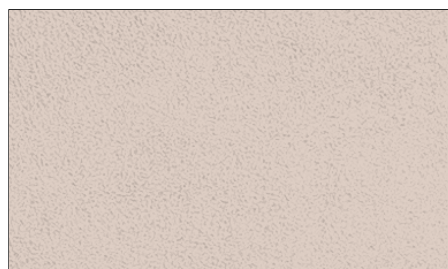
CASA115



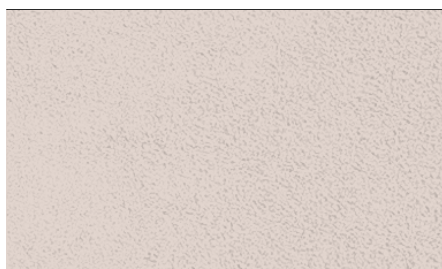
CASA116



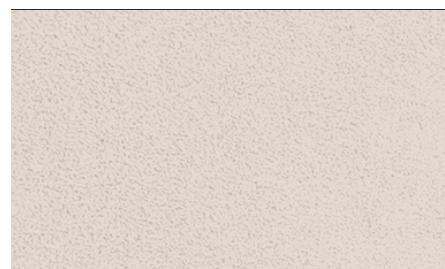
CASA117



CASA118



CASA119



CASA120



CASA121



CASA122



CASA123



CASA124



CASA125



CASA126



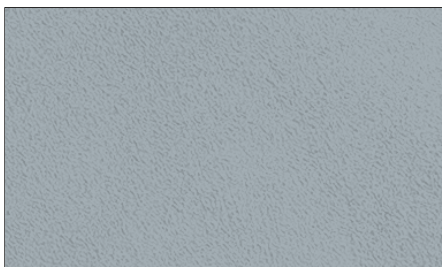
CASA127



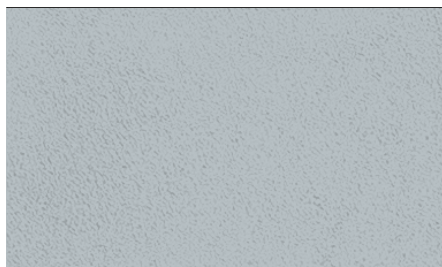
CASA128



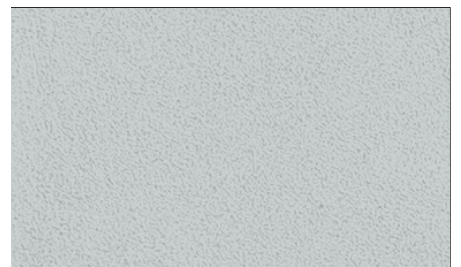
CASA129



CASA130



CASA131



CASA132



CASA133*



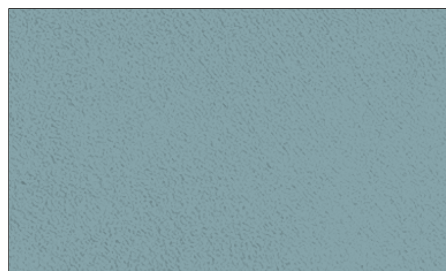
CASA133



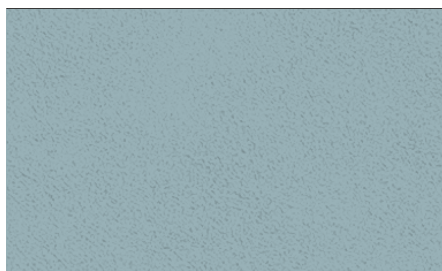
CASA134



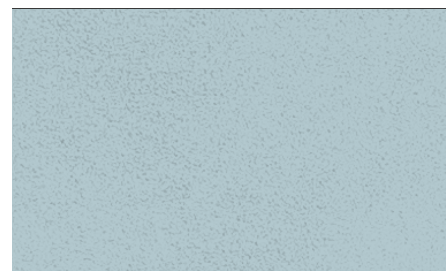
CASA135



CASA136



CASA137



CASA138



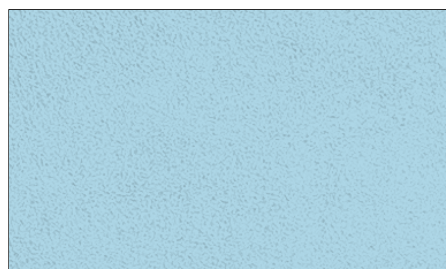
CASA139



CASA140



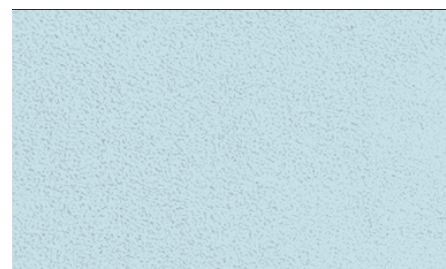
CASA141



CASA142



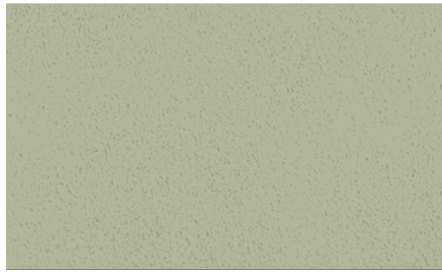
CASA143



CASA144



CASA145



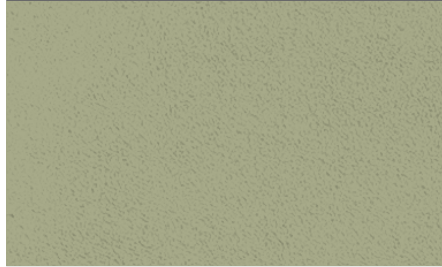
CASA146



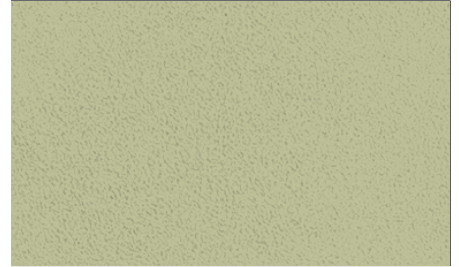
CASA147



CASA148



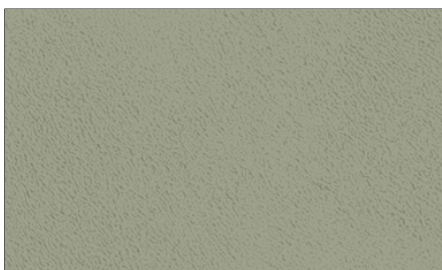
CASA149



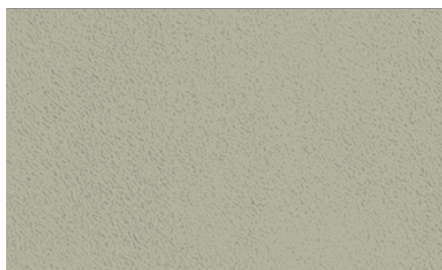
CASA150



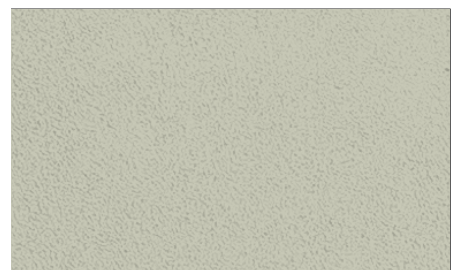
CASA155*



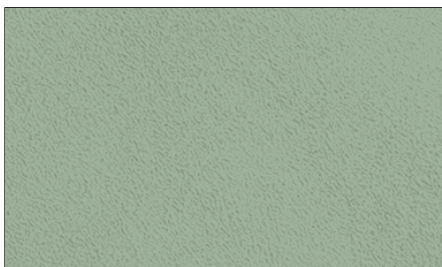
CASA151



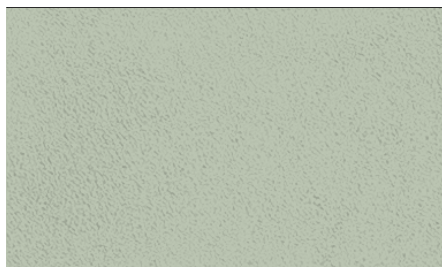
CASA152



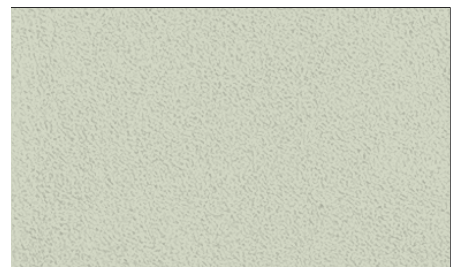
CASA153



CASA154



CASA155



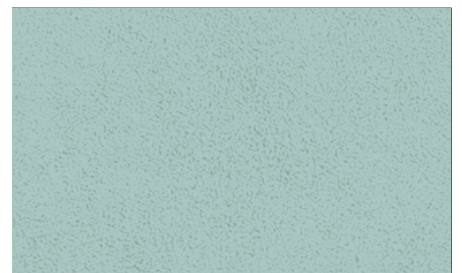
CASA156



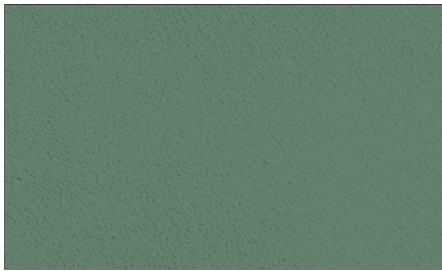
CASA157



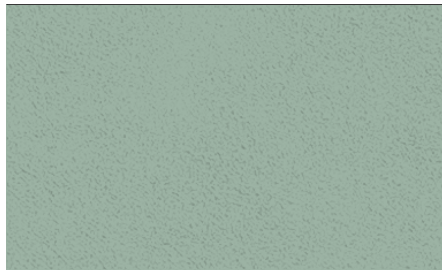
CASA158



CASA159



CASA160



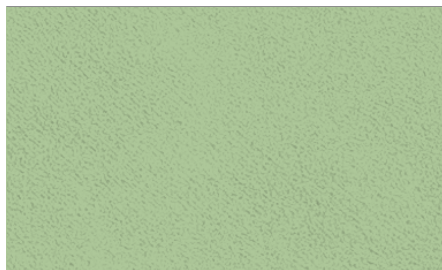
CASA161



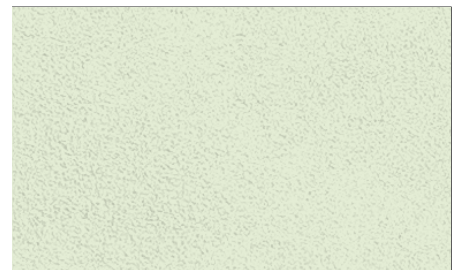
CASA162



CASA163



CASA164



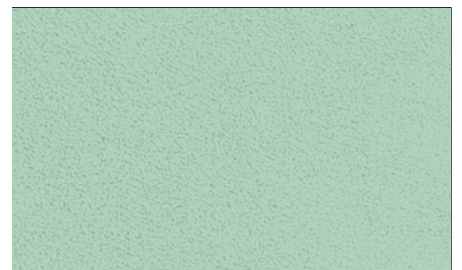
CASA165



CASA166



CASA167



CASA168

IT

CASAMOOD: LA PITTURA MATERICA PER UN DESIGN AUTENTICO PER ESTERNI ED INTERNI

CASAMOOD, una pittura decorativa in fase acquosa, offre un aspetto distintivo e sofisticato, caratterizzato da una finitura ruvida e opaca. La sua texture unica, creata con l'utilizzo di cariche selezionate di alta qualità, non solo conferisce agli ambienti un carattere attuale e ricercato, ma aggiunge anche una dimensione materica che evoca un senso di artigianalità e calore. Questa pittura è estremamente versatile e può essere applicata sia su superfici interne che esterne, rendendola la scelta ideale per chi desidera trasformare qualsiasi spazio con un tocco di eleganza e design contemporaneo, creando atmosfere uniche e personalizzate che si distinguono per stile e raffinatezza in ogni ambiente.

CARATTERISTICHE TECNICHE:

Aspetto: opaco ad effetto sabbaiato

Resa media: 6 - 8 mq per litro (ad uno strato)

Peso specifico: 1,63 ± 0,05 Kg/L

Diluizione: al 10-20% max con acqua

Tempo di lavorabilità: 10 - 20 minuti

Essiccazione superficiale: 1 - 2 ore

Essiccazione in profondità (a 22°C): 6 - 8 ore

Attrezzi per l'applicazione: Rullo, pennello

Temperatura min./max di lavorazione: 5° - 35°C

Mani: 1 o 2 a seconda dell'effetto desiderato

GUIDA ALL'APPLICAZIONE:

Per un risultato impeccabile, segui attentamente questi passaggi:

1. PREPARAZIONE DEL FONDO

La chiave per una finitura perfetta è una superficie ben preparata. Assicurati che la superficie di applicazione sia essere priva di sporco, resine o altri contaminanti. Su superfici nuove è comunque consigliato carteggiare e ripulire. In caso di presenza di precedenti vernicianti sfarinanti oppure non sufficientemente adesi è necessario procedere alla rimozione meccanica (es. carteggiatura) ed al ripristino della coerenza della superficie.

Applica una mano di Fissativo acrilico ACRYLFIX diluito 1:5 (vedere relativa scheda tecnica), al fine di bloccare l'eventuale sfarinamento ed uniformare l'assorbimento.

Lascia asciugare per 4-5 ore, quindi procedi con l'applicazione di una o due mani di FONDO L/R, possibilmente in tinta con la finitura scelta e lasciare asciugare 6/8 ore prima della stesura del decorativo di finitura. Questo passaggio è fondamentale, poiché il fondo permetterà alla finitura CASAMOOD di acquisire la sua naturale luminosità e di far risaltare al meglio le sfumature cromatiche del decoro.

2. STESURA DELLA FINITURA

Diluisci CASAMOOD con un massimo del 10-20% di acqua.

Prima mano: Applica la prima mano di prodotto con un pennello, cercando di coprire uniformemente l'intera superficie.

Seconda mano: Attendi che la prima mano sia completamente asciutta (solitamente 4-6 ore). Successivamente, applica la seconda mano di CASAMOOD. Con l'apposito pennello, esegui movimenti incrociati e irregolari sulla parete. Questo specifico gesto è ciò che darà vita all'esclusivo effetto sabbaiato e ai suoi giochi di luce.

EN

CASAMOOD: THE TEXTURED PAINT FOR AUTHENTIC DESIGN FOR EXTERIORS AND INTERIORS

CASAMOOD is a water-based decorative paint that offers a distinctive and sophisticated look, characterized by a rough and matte finish. Its unique texture, created with the use of selected high-quality fillers, not only gives rooms a contemporary and refined character but also adds a material dimension that evokes a sense of craftsmanship and warmth. This paint is extremely versatile and can be applied to both internal and external surfaces, making it the ideal choice for anyone who wants to transform any space with a touch of elegance and contemporary design, creating unique and personalized atmospheres that stand out for style and sophistication in every environment.

TECHNICAL FEATURES:

Appearance: Opaque with a sanded effect

Average yield: 6 - 8 sqm per liter (per coat)

Specific weight: 1.63 ± 0.05 Kg/L

Dilution: 10-20% max with water

Working time: 10 - 20 minutes

Surface drying time: 1 - 2 hours

In-depth drying time (at 22°C): 6 - 8 hours

Application tools: Roller, brush

Min./max working temperature: 5° - 35°C

Coats: 1 or 2 depending on the desired effect

APPLICATION GUIDE:

For a flawless result, follow these steps carefully:

1. SUBSTRATE PREPARATION

The key to a perfect finish is a well-prepared surface. Make sure the application surface is free of dirt, resins, or other contaminants. On new surfaces, it is still recommended to sand and clean. In case of previous flaking or insufficiently adhering paints, it is necessary to proceed with mechanical removal (e.g., sanding) and restore the surface's coherence.

Apply a coat of ACRYLFIX acrylic fixative diluted 1:5 (see relevant technical data sheet) to block any flaking and standardize absorption.

Let it dry for 4-5 hours, then proceed with the application of one or two coats of FONDO L/R, preferably tinted to match the chosen finish, and let it dry for 6-8 hours before applying the decorative topcoat. This step is fundamental, as the base coat will allow the Casamood finish to acquire its natural luminosity and bring out the chromatic nuances of the decor.

2. APPLICATION OF THE FINISH

Dilute Casamood with a maximum of 10-20% water.

First coat: Apply the first coat of the product with a brush, trying to cover the entire surface uniformly.

Second coat: Wait for the first coat to be completely dry (usually 4-6 hours). Then, apply the second coat of Casamood. With the appropriate brush, make crisscross and irregular movements on the wall. This specific action is what will give life to the exclusive sanded effect and its play of light.

FR

CASAMOOD: LA PEINTURE TEXTURÉE POUR UN DESIGN AUTHENTIQUE POUR L'EXTÉRIEUR ET L'INTÉRIEUR

CASAMOOD est une peinture décorative en phase aqueuse qui offre un aspect distinctif et sophistiqué, caractérisé par une finition rugueuse et mate. Sa texture unique, créée grâce à l'utilisation de charges sélectionnées de haute qualité, confère non seulement aux pièces un caractère actuel et recherché, mais ajoute également une dimension matérielle qui évoque un sentiment d'artisanat et de chaleur. Cette peinture est extrêmement polyvalente et peut être appliquée sur des surfaces intérieures et extérieures, ce qui en fait le choix idéal pour quiconque souhaite transformer n'importe quel espace avec une touche d'élégance et de design contemporain, créant des ambiances uniques et personnalisées qui se distinguent par leur style et leur raffinement.

CARACTÉRISTIQUES TECHNIQUES :

Aspect : Opaque à effet sablé

Rendement moyen : 6 - 8 m² par litre (par couche)

Poids spécifique : 1,63 ± 0,05 Kg/L

Dilution : 10-20 % max avec de l'eau

Temps de maniabilité : 10 - 20 minutes

Temps de séchage en surface : 1 - 2 heures

Temps de séchage en profondeur (à 22°C) : 6 - 8 heures

Outils d'application : Rouleau, pinceau

Température min./max. de travail : 5° - 35°C

Couches : 1 ou 2 selon l'effet désiré

GUIDE D'APPLICATION :

Pour un résultat impeccable, suivez attentivement ces étapes :

1. PRÉPARATION DU FOND

La clé d'une finition parfaite est une surface bien préparée. Assurez-vous que la surface d'application est exempte de saleté, de résines ou d'autres contaminants. Sur les surfaces neuves, il est recommandé de poncer et de nettoyer. En cas de présence de couches de peinture précédentes farineuses ou peu adhérentes, il est nécessaire de procéder à un enlèvement mécanique (par exemple, ponçage) et de restaurer la cohérence de la surface.

Appliquez une couche de fixateur acrylique ACRYLFIX dilué 1:5 (voir fiche technique correspondante) afin de bloquer tout effritement et d'uniformiser l'absorption.

Laissez sécher pendant 4-5 heures, puis appliquez une ou deux couches de FONDO L/R, de préférence teintées pour correspondre à la finition choisie, et laissez sécher 6-8 heures avant l'application de la finition décorative. Cette étape est fondamentale, car le fond permettra à la finition Casamood d'acquiescer sa luminosité naturelle et de faire ressortir au mieux les nuances chromatiques du décor.

2. APPLICATION DE LA FINITION

Diluez Casamood avec un maximum de 10-20 % d'eau.

Première couche : Appliquez la première couche de produit avec un pinceau, en essayant de couvrir uniformément toute la surface.

Deuxième couche : Attendez que la première couche soit complètement sèche (généralement 4-6 heures). Ensuite, appliquez la deuxième couche de Casamood. Avec le pinceau approprié, effectuez des mouvements croisés et irréguliers sur le mur. Ce geste spécifique est ce qui donnera vie à l'effet sablé exclusif et à ses jeux de lumière.

RU

CASAMOOD: ФАКТУРНАЯ КРАСКА ДЛЯ АУТЕНТИЧНОГО ДИЗАЙНА ДЛЯ НАРУЖНЫХ И ВНУТРЕННИХ РАБОТ

CASAMOOD - это декоративная краска на водной основе, которая придает стенам отличный и изысканный вид, характеризующийся шероховатой и матовой отделкой. Ее уникальная текстура, созданная с использованием отборных высококачественных наполнителей, не только придает помещениям современный и утонченный характер, но и добавляет материальный объем, который вызывает ощущение ручной работы и тепла. Эта краска чрезвычайно универсальна и может применяться как на внутренних, так и на наружных поверхностях, что делает ее идеальным выбором для тех, кто хочет преобразить любое пространство, добавив ему элегантности и современного дизайна, создавая уникальные и персонализированные атмосферы, которые выделяются стилем и изысканностью в каждом помещении.

ТЕХНИЧЕСКИЕ ХАРАКТЕРИСТИКИ:

Внешний вид: Матовый с эффектом песчаника

Средний расход: 6 - 8 м² на литр (в один слой)

Удельный вес: 1,63 ± 0,05 кг/л

Разбавление: Макс. 10-20% водой

Время работы: 10 - 20 минут

Время поверхностного высыхания: 1 - 2 часа

Время полного высыхания (при 22°C): 6 - 8 часов

Инструменты для нанесения: Валик, кисть

Мин./макс. рабочая температура: 5° - 35°C

Количество слоев: 1 или 2 в зависимости от желаемого эффекта

РУКОВОДСТВО ПО НАНЕСЕНИЮ:

Для безупречного результата внимательно следуйте этим шагам:

1. ПОДГОТОВКА ОСНОВАНИЯ

Ключ к идеальной отделке - хорошо подготовленная поверхность. Убедитесь, что поверхность нанесения не содержит грязи, смол или других загрязняющих веществ. На новых поверхностях все же рекомендуется отшлифовать и очистить. В случае наличия предыдущих осыпающихся или недостаточно сцепленных лакокрасочных покрытий необходимо провести механическое удаление (например, шлифование) и восстановить целостность поверхности.

Нанесите один слой акрилового фиксатива ACRYLFIX, разбавленного 1:5 (см. соответствующий технический паспорт), чтобы остановить возможное осыпание и выровнять впитываемость.

Дайте ему высохнуть в течение 4-5 часов, затем нанесите один или два слоя FONDO L/R, желательно в тон выбранной отделки, и дайте высохнуть 6-8 часов, прежде чем наносить финишное декоративное покрытие. Этот шаг является фундаментальным, так как грунтовка позволит финишному покрытию Casamood приобрести свою естественную яркость и наилучшим образом подчеркнуть хроматические нюансы декора.

2. НАНЕСЕНИЕ ФИНИШНОГО ПОКРЫТИЯ

Разбавьте Casamood максимум 10-20% водой.

Первый слой: Нанесите первый слой продукта кистью, стараясь равномерно покрыть всю поверхность.

Второй слой: Дождитесь полного высыхания первого слоя (обычно 4-6 часов). Затем нанесите второй слой Casamood. Используя соответствующую кисть, выполняйте перекрестные и неровные движения по стене. Именно это специфическое движение придает эксклюзивному эффекту песчаника и его игре света уникальный характер.

RO

CASAMOOD: VOPSEAUĂ TEXTURATĂ PENTRU UN DESIGN AUTENTIC PENTRU EXTERIOR ȘI INTERIOR

CASAMOOD este o vopsea decorativă pe bază de apă care oferă un aspect distinctiv și sofisticat, caracterizat printr-o finisare aspră și mată. Textura sa unică, creată cu ajutorul unor umpluturi selectate de înaltă calitate, nu numai că oferă încăperilor un caracter actual și rafinat, dar adaugă și o dimensiune materială care evocă un sentiment de măiestrie artizanală și de căldură. Această vopsea este extrem de versatilă și poate fi aplicată atât pe suprafețe interioare, cât și exterioare, făcând-o alegerea ideală pentru oricine dorește să transforme orice spațiu cu o notă de eleganță și design contemporan, creând atmosfere unice și personalizate care se disting prin stil și rafinament în fiecare mediu.

CARACTERISTICI TEHNICE:

Aspect: Mat cu efect de nisip

Randament mediu: 6 - 8 mp pe litru (la un singur strat)

Greutate specifică: 1,63 ± 0,05 Kg/L

Diluție: 10-20% max cu apă

Țimp de lucru: 10 - 20 minute

Uscare la suprafață: 1 - 2 ore

Uscare în profunzime (la 22°C): 6 - 8 ore

Instrumente de aplicare: Rulou, pensulă

Temperatură min./max. de lucru: 5° - 35°C

Straturi: 1 sau 2 în funcție de efectul dorit

GHID DE APLICARE:

Pentru un rezultat impecabil, urmați cu atenție acești pași:

1. PREGĂTIREA SUPORTULUI

Cheia pentru o finisare perfectă este o suprafață bine pregătită. Asigurați-vă că suprafața de aplicare este lipsită de murdărie, rășini sau alți contaminanți. Pe suprafețele noi, se recomandă oricum șlefuirea și curățarea. În cazul în care există vopsitorii anterioare sfărâncioase sau care nu aderă suficient, este necesar să se procedeze la îndepărtarea mecanică (de ex. șlefuirea) și la restabilirea coerenței suprafeței.

Aplicați un strat de fixativ acrilic ACRILFIX diluat 1:5 (a se vedea fișa tehnică corespunzătoare), pentru a bloca orice sfărâmare și a uniformiza absorbția.

Lăsați să se usuce timp de 4-5 ore, apoi procedați cu aplicarea unui sau a două straturi de FONDO L/R, de preferință în nuanța finisajului ales, și lăsați să se usuce 6-8 ore înainte de a aplica vopseaua decorativă de finisare. Acest pas este fundamental, deoarece fondul va permite finisajului Casamood să-și dobândească luminozitatea naturală și să scoată în evidență nuanțele cromatice ale decorului.

2. APLICAREA FINISAJULUI

Diluțați Casamood cu un maxim de 10-20% apă.

Primul strat: Aplicați primul strat de produs cu o pensulă, încercând să acoperiți uniform întreaga suprafață.

Al doilea strat: Așteptați ca primul strat să fie complet uscat (de obicei 4-6 ore). Apoi, aplicați al doilea strat de Casamood. Cu pensula corespunzătoare, efectuați mișcări încrucișate și neregulate pe perete. Acest gest specific este cel care va da viață efectului exclusiv de nisip și jocurilor sale de lumină.

AR

كازامود طلاء ذو ملمس مميز لتصميم أصيل للديكورات الخارجية والداخلية

كازامود طلاء زخرفي مائي يضيف على مساحاتك مظهرًا متميزًا وراقيًا، ويمنحها لمسة نهائية خشنة وغير لامعة (مطفية). ملمسه الفريد، المُصمم باستخدام حشوات منتقاة عالية الجودة، لا يمنح المساحات طابعًا عصريًا وراقيًا فحسب، بل يكسوها طابعاً معاصراً متقناً ويمنحها بُعداً ملموساً يستحضر الحسَّ الحرفيَّ والدِّفء. يتميز هذا الطلاء بمرونته العالية ليتلاءم مع جميع الأسطح الداخلية منها والخارجية، مما يجعله الخيار الأمثل للراغبين في إضفاء لمسة من الأناقة والتصميم المعاصر وخلق أجواء فريدة وشخصية تُبرز الأناقة والراقي في كل بيئة.

المواصفات التقنية

المظهر: معتم بتأثير رملي.

المعدل المتوسط للتغطية: 6-8 متر مربع لكل لتر (طبقة واحدة)

الوزن النوعي: 1.63 ± 0.05 كجم/لتر.

التخفيف: جاهز للاستخدام، بحد أقصى لنسبة الماء 10-20%.

زمن العمل: 10-20 دقيقة.

زمن جفاف السطح: 1-2 ساعة.

الجفاف العميق عند (22 درجة مئوية): 6 - 8 ساعات.

عدة الطلاء: فرشاة الطلاء والبيكرة (رول).

درجة حرارة العمل الدنيا والقصى: 5°م - 35°م.

عدد طبقات الطلاء: 1 أو 2 حسب التأثير المرغوب.

دليل الطلاء

للحصول على نتيجة رائعة، اتبع هذه الخطوات بعناية

تحضير السطح الأساسي

إن السطح المجهز جيداً هو مفتاح الحصول على طبقة طلاء نهائية مثالية. تأكد من الطلاء خالي من الأوساخ أو الصمغ أو الملوثات الأخرى. من الأفضل أن سطح دائماً صنفرة وتنظيف الأسطح الجديدة. ينصح بإزالة طبقات الطلاء السابقة المتقشرة وضع طبقة واحدة. (أو غير الملتصقة بطريقة يدوية باستخدام ورق الصنفرة مثلاً مخففة بنسبة 1:5) (انظر إلى الورقة ACRILFIX من مادة التثبيت الأكريليكية التقنية ذات الصلة) وذلك لمنع أي تقشر محتمل وتوحيد الامتصاص وإعادة تجانس السطح.

FONDO L/R اتركها لتجف لمدة 4-5 ساعات، ثم ضع طبقة أو طبقتين من ويفضل أن يكون بنفس لون الطلاء النهائي المختار، واطركها لتجف لمدة 6-8 ساعات قبل وضع طبقة التشطيب الزخرفية. هذه الخطوة ضرورية، حيث أن الطبقة الأساسية ستسمح لطلاء كازامود باكتساب لمعانه الطبيعي وإبراز الفروق اللونية للديكور بأحسن مظهر.

وضع الطلاء النهائي

خفّف كازامود بحدّ أقصى 10-20% ماء. الطبقة الأولى: ضع الطبقة الأولى

بالفرشاة مع السعي لتغطية السطح بشكل متساوي.

الطبقة الثانية: انتظر حتى تجف الطبقة الأولى تماماً (عادة 4-6 ساعات)، ثم ضع

الطبقة الثانية من كازامود.

باستخدام الفرشاة المناسبة، قم بحركات متقاطعة وغير منتظمة على الحائط. هذه الحركة بالذات هي التي ستضفي الحياة على التأثير الرملي الفريد للتصميم وتلاعبه بالضوء.

ALBANIAN
SQ - Shqip

FLETË PRODUKTI



ARMENIAN
HY - Հայերեն

ԱՊՐԱՆՔԻ ԹԵՂԵԹԻՎ



AZERBAIJANI
AZ - Azərbaycanca

MƏHSUL VƏRƏQƏSİ



BENGALI
BN - বাংলা

পণ্য সীট



BULGARIAN
BG - Български

ПРОДУКТОВ ЛИСТ



CHINESE
ZH - 中文

产品说明书



DANISH
DA - Dansk

PRODUKTDATABLAD



DUTCH
NL - Nederlands

PRODUCTBLAD



FINNISH
FI - Suomi

TUOTELEHTI



GERMAN
DE - Deutsch

PRODUKTDATENBLATT



GREEK
EL - Ελληνικά

Φύλλο προϊόντος



HINDI
HI - हिन्दी

उद्द सौट



HUNGARIAN
HU - Magyar

TERMÉKADATLAP



INDONESIAN
ID - Bahasa Indonesia

LEMBAR PRODUK



JAPANESE
JA - 日本語

製品シート



KOREAN
KO - 한국어

제품 시트



MALTESE
MT - Malti

SKEDA TAL-PRODOTT



POLISH
PL - Polski

KARTA PRODUKTU



PORTOGUESE
PT - Português

FICHA DE PRODUTO



SPANISH
ES - Español

FICHA DE PRODUCTO



SWEDISH
SV - Svenska

PRODUKTBLAG



THAI
TH - ไทย

အိတ်အိတ်အိတ်



TURKISH
TR - Türkçe

ÜRÜN BİLGİ FORMU



VIETNAMESE
VI - Tiếng việt

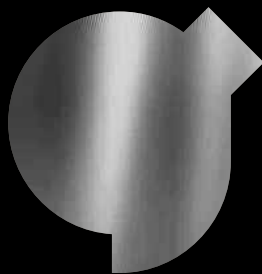
TỜ SẢN PHẨM



* Si prega di notare che le tinte mostrate nelle immagini potrebbero differire leggermente dai campioni colore

Please note that the colors shown in the images may differ slightly from the color samples.

Veuillez noter que les teintes affichées dans les images peuvent légèrement différer des échantillons de couleur.



Giolli Srl Industria Colori
Via Enzo Ferrari, sn
61036 Colli al Metauro (PU) - Italy
Tel. +39 0721 899 935
info@colorificiogiolli.it
www.colorificiogiolli.it

10/2025

